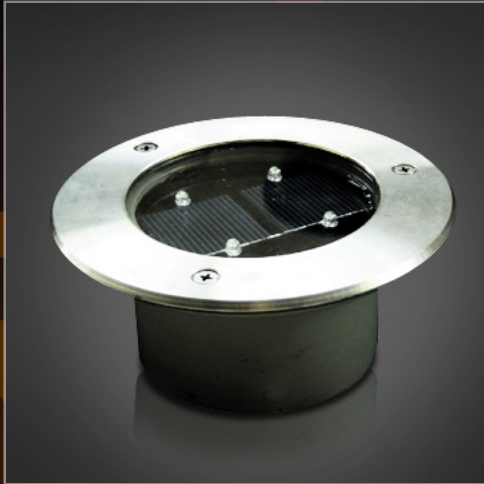


LUNADECO

LDL-130

Specs and Technical Data



Solar Panel Material : Poly-crystalline silicon / Single-crystalline silicon (3v, 130mA)

Battery : Ni-MH (1400mAH)

Light Source : Super luminous LEDs

LED quantity : 4 LEDs

Light Mode : Steady (or) Flashing LED Lights

Casing Material : Aluminum Alloy and Polycarbonate

Size : 120*38mm

Loading Capacity : Around 10 tons

Waterproof Grade : IP>67

Work temperature : Min - 25 degrees Celsius

Max + 75 degrees Celsius

Available Colors :



Applications

- ★ Building Exteriors
- ★ Bike Paths
- ★ Boardwalk areas
- ★ Fountain Areas
- ★ Landscape projects
- ★ Pool Decks
- ★ Park Walkways
- ★ Stairways
- ★ Patios
- ★ and the list goes on!!!